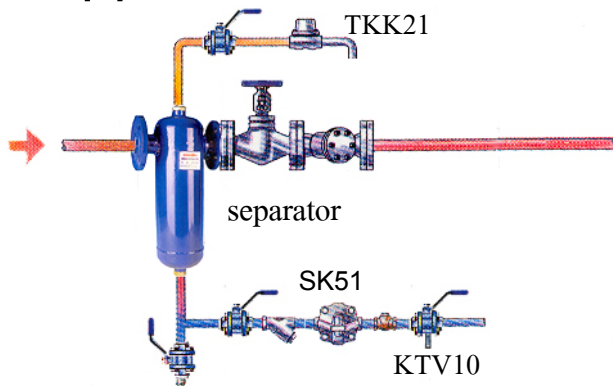
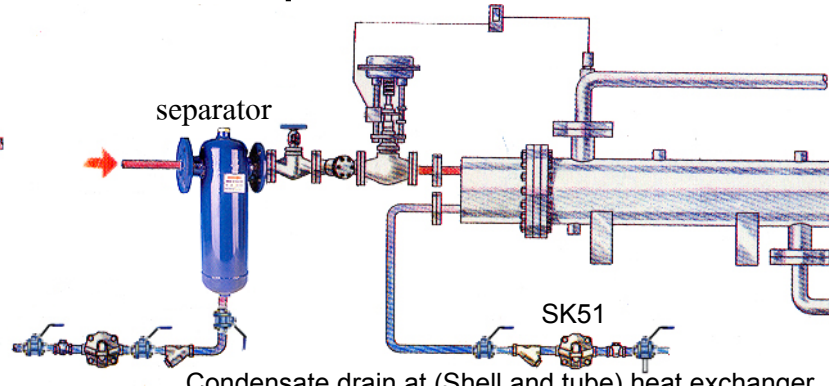


Application of ball float steam trap with thermostatic air vent model SK 51

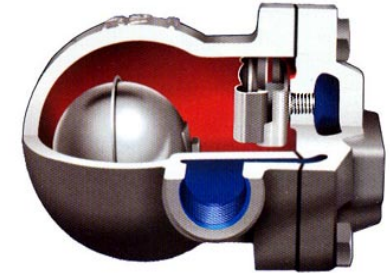


Condensate drain at separator.

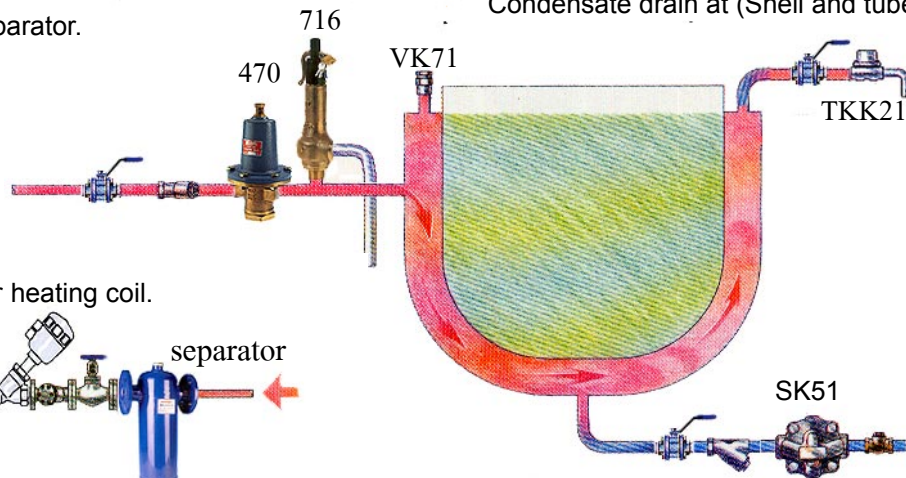


Condensate drain at (Shell and tube) heat exchanger.

**Ball Float Steam Trap with
Thermostatic Air Vent
Size 1/2" - 3/4" - 1" Screwed BSP./Flanged**

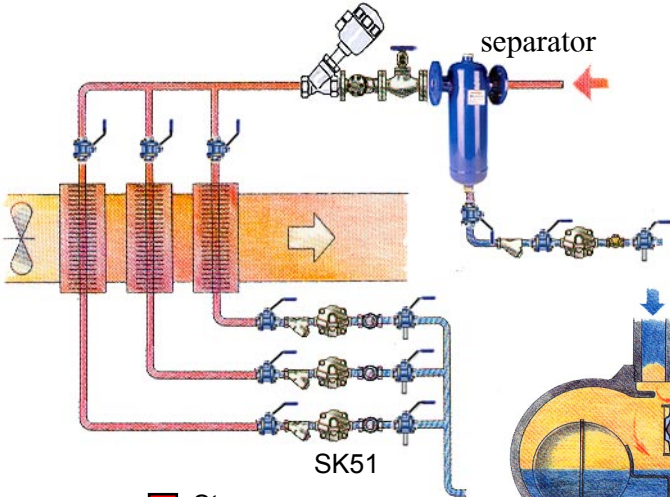


AYVAZ

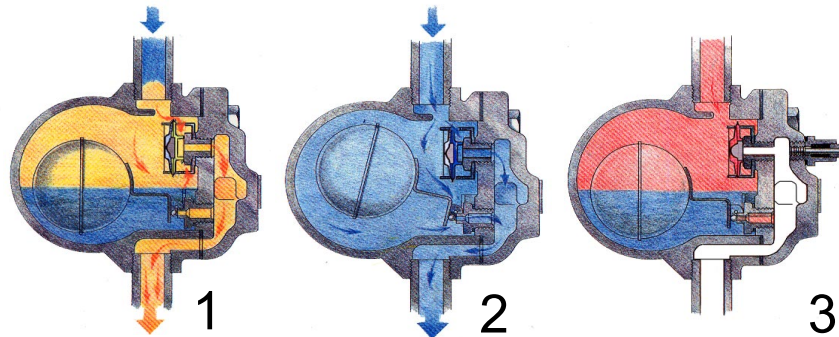


Condensate drain at air heating coil.

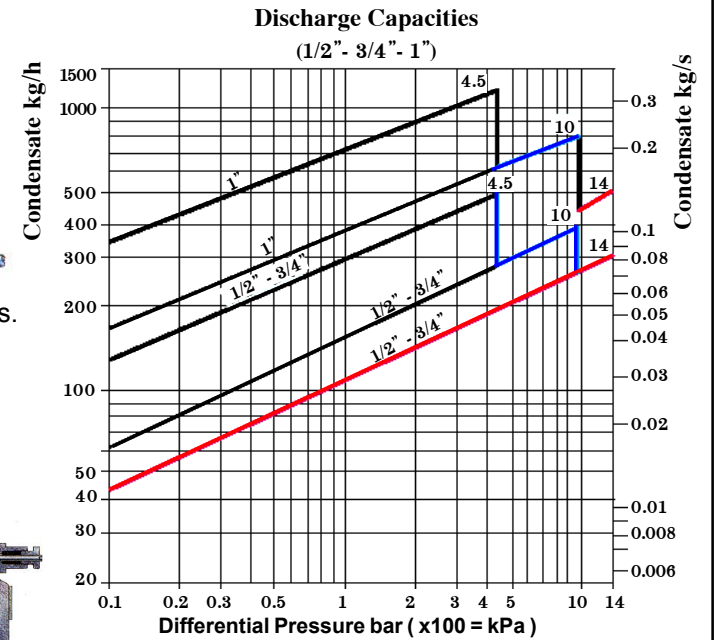
Condensate drain at steam jacket kettles.



BALL FLOAT STEAM TRAP OPERATION



- Steam
- Condensate
- Air



Red Chart 14 bar diff.press. **Blue Chart** 10 bar diff.press.
Black Chart 4.5 bar diff. press.